



NCTE[®] STUDY GUIDES

for Students

Student Benefits

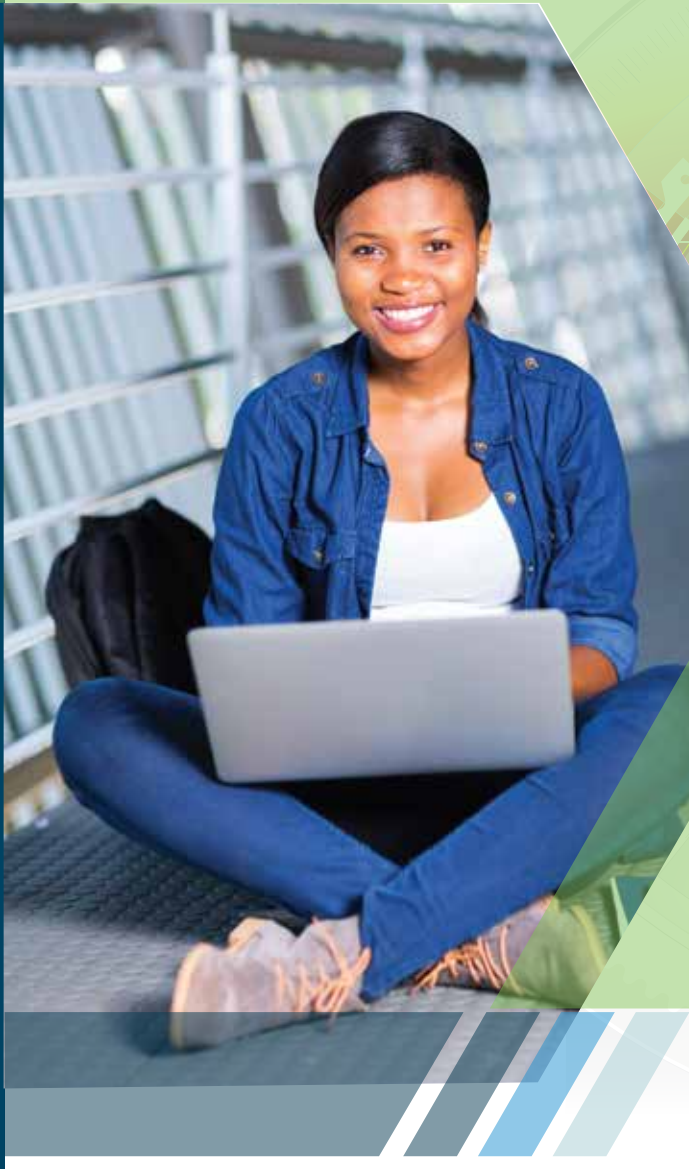
Provide your students with a test preparation advantage! Study guides are useful tools which can be completed individually or in small groups.

- ★ Multiple-choice assessment overview:
 - List of standards and competencies
 - Assessment content distribution
 - Sample questions
 - Study checklist by standard and competencies
- ★ Performance assessment overview:
 - Description of hands-on activities (jobs)
 - Study checklist by performance job

Teacher Benefits

Teachers and students work together to build confidence in preparation for testing. The teacher companion guide provides several helpful features including:

- ★ Tips and suggestions for:
 - Overcoming test anxiety
 - Improving study skills
 - Preparing timelines
 - Presenting sample questions, including rationale for correct and incorrect answers
 - Using specific hints to identify the content areas students find most difficult



“NOCTI Study Guides are an excellent value. My students appreciate having information to help them prepare.”

*J. Hensley, Drafting Teacher,
New Jersey*

Sample Questions

NOCTI's Study Guides include embedded sample questions and associated rationale for correct and incorrect answers to promote classroom discussion.

- ★ **Students** will be introduced to test question format.
- ★ **Teachers** will:
 - Review the sample questions with their students
 - Identify content to assist with a more focused review

Study Guide Packages

Study Guide Package Price.....\$40.00

- Available in Digital or Paper Format
- One Teacher Companion Guide
- Ten Student Study Guides
- Access to Online Sample Questions

Additional Student Study Guides

\$14.00/set of five

Ordering Information...

- Orders are placed online at the NOCTI Client Services Center by your Site Coordinator.
- Access to the Digital Study Guides is provided within two business days of order receipt; paper-based Study Guides are shipped within two weeks of order receipt.

800.334.6283 • nocti.org